



## SIEMENS Main Motor CNC Hydraulic Sheet Metal Bending Machine

Our Product Introduction

for more products please visit us on [genuocnc.com](http://genuocnc.com)

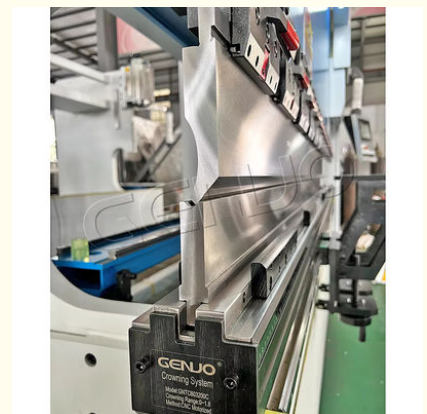
### Basic Information

- Place of Origin: China
- Brand Name: genuo
- Certification: M.2019.206.C3862
- Model Number: HSC-40T/63T/80T/100T/125T/160T
- Minimum Order Quantity: 1
- Price: negotiable
- Packaging Details: carton box
- Delivery Time: 90 days
- Payment Terms: L/C,T/T,D/P,D/A
- Supply Ability: 1 Set/Sets Every 15~35 days



### Product Specification

- Machine Name: Hydraulic Synchronize CNC Bending Machine
- Machine Application: Stainless Steel Sheet Metal Plate Bending
- CNC Controller: ESTUN/DELEM/CYBELEC
- Voltage Specification: 220V/380V/415V/440V
- Color: Customer Choose
- Main Motor: SIEMENS / STJ
- Machine Hydraulic System: Bosch Rexroth Germany System
- After-sales Service: Online Video Technical Support
- Quality Assurance Service: Presented Two Years Warranty
- Optional Length: 1250/1600/2500/3200/4000
- Brand: GENUO
- Highlight: CNC Hydraulic Sheet Metal Bending Machine, SIEMENS Motor Sheet Metal Bending Machine, Hydraulic Metal Sheet Bending Machine CNC



### More Images



## Product Description

### Factory Price SIEMENS Main Motor Metal Sheet Bending Machine CNC Hydraulic Sheet Metal Bending Machine For Sale

#### → Product Introduction:

GENUO Genius HSC Series CNC press brake is a high strength integrated machine tool design, more durable. The CybTouch/Delem CNC control system can independently and accurately control the Y1 and Y2 axes, making the ram run simultaneously, and automatically calculate the pressure, lifting and developing dimensions according to the length and thickness of the workpiece. In addition, 2D and 3D image editing and presentation options feature to make bending easier and more efficient. Advanced servo proportional valve, through the grating ruler real-time feedback, to ensure high bending accuracy and stability. Large travel and daylight combined with a multi-axis optional high-precision back guide rule system allow for more flexible bending sizes and angles. This is the most mainstream, the most popular cost-effective CNC press brake on the market. 40T to 800T Optional.

#### → Product Feature:

1. Adopt holistic processing and tempering ultra-high strength frame;
2. Advanced servo proportional valve, strong stability;
3. High precision back guide rule system, more flexible bending size and Angle;
4. High quality hydraulic system, large power, fast speed;
5. Powerful multi-functional CNC controller, 2D and 3D image editing and presentation;
6. The rear stopper adopts imported ball screw and linear guide, with high precision;
7. Special mold can be customized according to the workpiece, and provide a full range of solutions.

#### → Machine Application:

Hydraulic CNC Press Brake - It is a sheet metal forming machine designed for cold rolling sheet metal processing, widely used in automobile, aircraft manufacturing, light industry, shipbuilding, container, elevator, railway vehicles and other industries of sheet metal bending processing.

#### → Product Configuration:

Standard Equipment:	Feature:
◆ CYBELEC CybTouch 12 CNC Control	◇ Delem DA-58T, ESA S640, DA-66T, ETC-16T
◆ Mono block welded rigid to deflection and high tensile steel frame	◇ 2 axis back gauge with R-axis or multi-axis
◆ High precision Y1, Y2 axis synchronized closed-loop feedback	◇ Z1, Z2 Joy stick control back gauge fingers
◆ Accurate heavy-duty X axis back gauge system	◇ DSP or SDKELI Laser front guard options
◆ Auto Motorized crowning system/Hydraulic cylinder crowning	◇ Energy saving and low noise main servo motor drive
◆ European-style punch and 4V/2V/1V Dies	◇ WILA type top and bottom tool clamping system
◆ Fast punch clamps and movable sliding front support	◇ Bending tools management cabinet or trolley
◆ BOSCH Rexroth hydraulic system, GIVI linear encoder	◇ Special heights, Daylight, Throat Depth are available
◆ SIEMENS main motor, Sunny pump, Schneider Electric	◇ 40~400 Tons and 4~20ft Bending Lengths options
◆ EMB ferrule type pipe connector, NO.K sealing rings	◇ Single/Tandem/Trio optional

#### → Machine :

## GENIUS HSC (WE67K) Series Press Brake

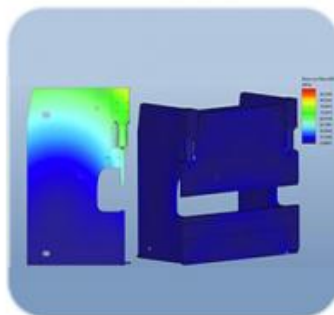


GENUO





## Structure Details

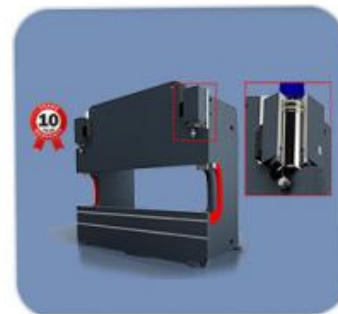


### ● Rigid Frame Construction

GENUO design components to very tight tolerances with SOLIDWORKS, CAD modelling techniques, and that CAE, ANSYS, SOLIDWORKS used as the method to analyze the linear static construction, stress and deformation for machine frames.

### ● Proportional Control

German Bosch Rexroth integrated "hydraulic system block", hydraulic transmission with high reliability, integrated hydraulic system can effectively alleviate the problem caused by leakage of hydraulic fluid.



### ● Linear Encoder Feedback

The deformation is measured accurately and compensated by feedback method. The accuracy can be achieved uM level.

## Backgauge System

Establishing the right back gauge for your projects will allow for increased part production and precision. From intricate parts which typically require more axes to large quantities that require more time and therefore increased cost, the correct back gauge for each job is essential to lowering costs per part which ultimately benefits your bottom line.





1 Axis Back Gauge (X)



4 Axis Back Gauge (X,R,Z1,Z2)

## CNC Controller



### ▲ CYBELEC CybTouch 12

High-contrast vivid colors touchscreen  
TouchProfile 2D graphic part creation  
function. Simple pages, clear display.  
4 + 1 axes control (Y1-Y2-X-R-Crowning)  
CT 12 features an intuitive touch screen  
user interface, offering a high integration  
of functions.



### ▲ Delem DA-53T

TCT 7" widescreen colour LCD display  
Program memory of 100 programs 25  
steps per program with tool library. DA  
-41T, compact touch CNC for 2-axes (Y,  
X) conventional press brakes.



### ▲ ESA VIS-630

10" color touch screen. Up to 4+1 axes  
High level performance in an economic,  
performing and easy to use CNC. Advanced  
graphic programming for greater  
ease of use sophisticated algorithms to  
make the most of the machines in all  
applications.

## Tooling and Clamps

GENUO provides a variety of tooling solutions to meet your different production needs. Not only that, we are also experts in the field of bending tools. If you have any special bend, our engineers will customize special tools for each workpiece.



Promecam /EURO Style  
punch Standard on  
all series press brake.  
Optional other shapes.



Wila NEW STD. Style  
punch are optional.  
The clamp system needs  
to match this style.



AMERICAN /Heavy Style  
punch Standard on GAINTE.  
Optional other shapes.



### ▲ Optional Upgradeable Clamps



GENUO One-Key Double-Sided Fast Clamp



Amada SGRIP Punch Holder

### Optional Configuration



#### CNC Sheet Follower

WILA'S state of the art Clamping systems can offer the ultimate solution when it comes to efficiently changing tools both hydraulic and Pneumatic. Accuracy and ergonomics have been coordinated to realize the highest level of productivity.



#### Auto Tool Clamping System

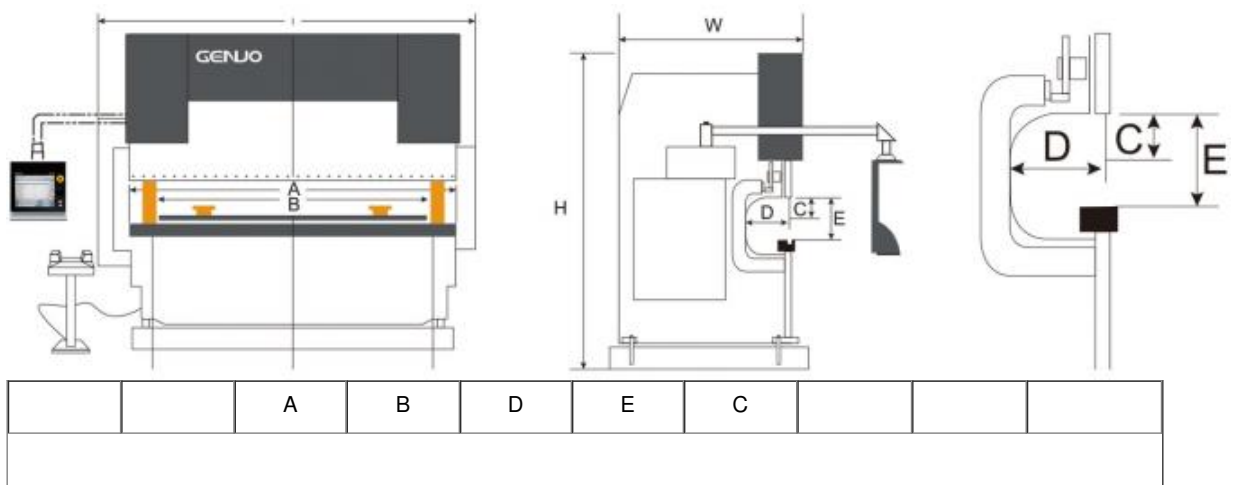
This CNC bending support suitable for all kinds of large sheet metal, especially thin metal sheet. Perfect to maintain synchronization with the sheet during the bending process, which lightens the operators work moving heavy pieces, improves bending efficiency and reduces operator risk.

#### LASER Safety Guards

DSP LASER protects the press brake operator from the danger of crushing that can take place accidentally between the moving part of the machine and the fixed one. It assures to carry out the machine working cycle penalizing its execution time in the least.



### HSC Technical Specification



Model	Nominal Pressure	Length of Table	Distance Between Columns	Throat Death	Open Height	Ram Strokes	Motor Power	Approx Weight	Overall Dimension
	(KN)	(mm)	(mm)	(mm)	(mm)	(mm)	(kw)	(kg)	(L x W x H) (mm)
40T/1600	400	1600	1300	300	420	150	4	3000	1950*1750*2350
63T/2500	630	2500	2000	320	420	150	5.5	4800	2850*1750*2350
80T/2500	800	2500	2000	350	480	200	7.5	5800	2850*1850*2450
100T/2500	1000	2500	2000	400	480	200	7.5	6500	2850*1850*2500
100T/3200	1000	3200	2700	400	480	200	7.5	8500	3850*1850*2600
125T/2500	1250	2500	2000	400	480	200	7.5	7600	3000*1850*2500
125T/3200	1250	3200	2700	400	480	200	11	9000	3850*1850*2600
125T/4000	1250	4000	3200	400	480	200	11	10000	4610*1850*2600
160T/3200	1600	3200	2700	400	480	200	11	10500	3900*1900*2600
160T/4000	1600	4000	3200	400	480	200	11	12000	4650*1900*2700
200T/3200	2000	3200	2700	400	480	200	15	12000	3900*1900*2700
200T/4000	2000	4000	3200	400	480	200	15	14000	4700*1900*2800
200T/5000	2000	5000	4000	400	480	200	15	18000	5800*1900*2900
200T/6000	2000	6000	4900	400	480	200	15	22000	6800*1900*3000
250T/3200	2500	3200	2700	400	520	250	18.5	14500	3900*2100*2800
250T/4000	2500	4000	3200	400	520	250	18.5	16500	4700*2100*2900
250T/5000	2500	5000	4000	400	520	250	18.5	20000	5800*2100*3000
250T/6000	2500	6000	4900	500	520	250	18.5	24000	6500*2100*3100
320T/3200	3200	3200	2700	400	520	250	22	17000	4000*2100*3000
320T/4000	3200	4000	3200	400	520	250	22	20000	4800*2200*3200
320T/5000	3200	5000	4000	500	520	250	22	25000	5800*2200*3400
320T/6000	3200	6000	4900	500	520	250	22	30000	6500*2200*3600
400T/4000	4000	4000	3200	500	600	320	30	26000	4800*2400*3500
400T/5000	4000	5000	4000	500	600	320	30	32000	5500*2400*3600
400T/6000	4000	6000	4900	500	600	320	30	38000	6500*2400*3800
500T/4000	5000	4000	3200	500	600	320	37	30000	4800*2600*3600
500T/5000	5000	5000	4000	500	600	320	37	39000	5500*2600*3800
500T/6000	5000	6000	4900	500	600	320	37	50000	6500*2600*4000



**Maanshan Genuo Machinery Manufacturing Co., Ltd.**



0086 555 7168598



sales@genuogroup.com



genuocnc.com

Wanda Center 1116, Yushan District, Maanshan, Anhui, China 243000