



Hydraulic Economic Synchronize CNC Press Brake 220V 380V 415V 440V

Our Product Introduction

Basic Information

- Place of Origin: China
- Brand Name: genuo
- Certification: M.2019.206.C3862
- Model Number: ESC-40T/63T/80T/100T/125T/160T
- Minimum Order Quantity: 1
- Price: negotiable
- Packaging Details: carton box
- Delivery Time: 90 days
- Payment Terms: L/C,T/T,D/P,D/A
- Supply Ability: 1 Set/Sets Every 15~35 days



Product Specification

- Product Name: Hydraulic Cnc Bending Machine
- Application: Stainless Steel Metal Sheet Plate Bending
- Machine Controller: Genuo Independent Research And Development
- CNC Control: ETC-16 CNC Control
- Applicable Voltage: 220V/380V/415V/440V
- Optional Color: Customer Choose
- Product Main Motor: STJ Main Motor
- Electrical Components: Schneider
- Hydraulic System: Bosch Rexroth Germany
- Applicable Material: Metal .Stainless Steel .Aluminum. And So On
- After-sales Service: Online Support Video Technical Support
- Product Selling Point: Competitive Price/Sustainability/high Precision
- Quality Assurance Service: Presented Two Years Warranty
- Degree Of Automation: Fully



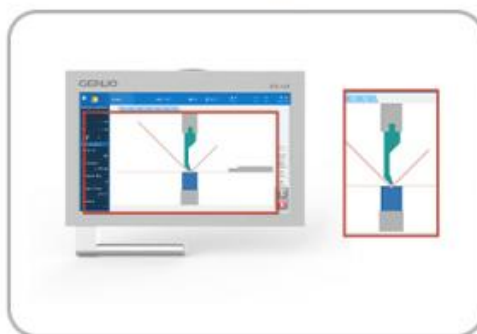
EXCELLENT ESC Series Press Brake



New Machine description

GENUO's Excellent ESC series is the latest generation of high-performance synchronized CNC Press Brake. Combining GENUO's independently developed controller, it maximizes value creation and reduces costs. User-friendly operating system and first-class design. Adhering to the philosophy of GENUO (Details Create Quality). With super quality and high precision, it also has a huge competitive advantage. More convenient to use, high cost performance!

CNC Control _



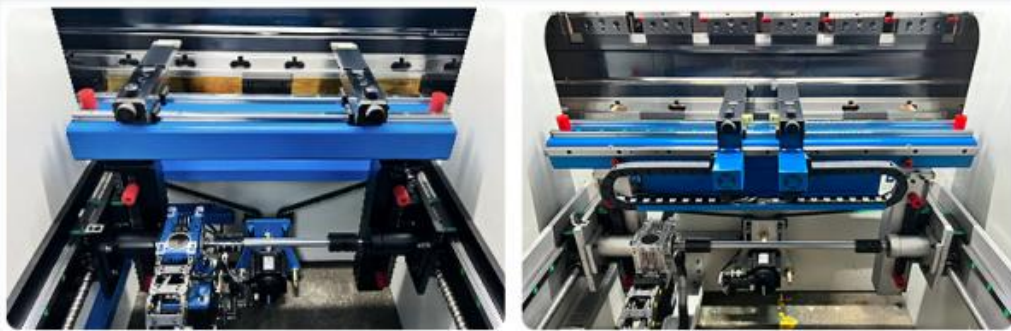
ETC-16T is a new generation of performance bending control system of GENUO dedicated to synchronous press brakes. The system has rich interfaces, which can be easily connected to the automatic production line as a bending unit. It can cooperate with industrial robots in interactive operation, to the greatest extent free from manual intervention, improve the accuracy and efficiency of the equipment.



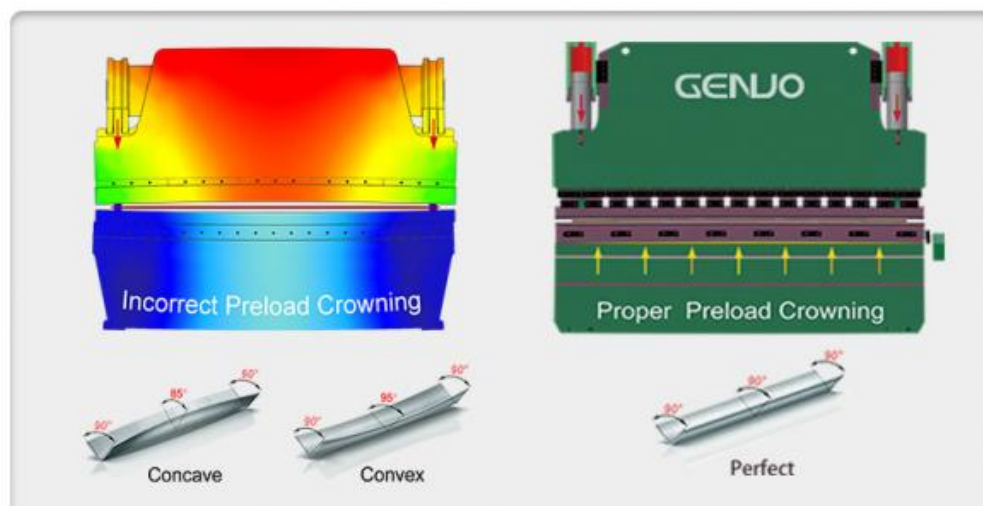
15.6" LED real color LCD screen with friendly man-machine interface, menu operation is easy to learn and easy to use. The Linux operating system is stable and reliable, High sensitivity resistive touch screen, support glove operation. Intelligent algorithm and Flexible programming, Automatically calculate the bending process, three modes for you to choose from.

Machine Main System—

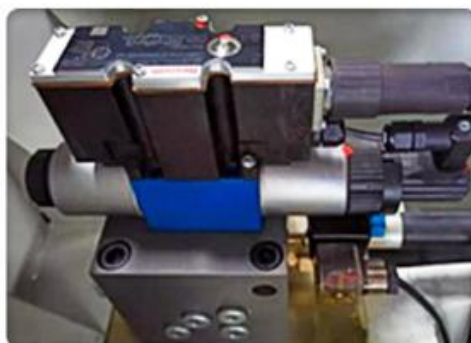
Backgauge System: Establishing the right back gauge for your projects will allow for increased part production and precision. From intricate parts which typically require more axes to large quantities that require more time and therefore increased cost, the correct back gauge for each job is essential to lowering costs per part which ultimately benefits your bottom line.



Auto Crowning System: To confirm a constant bend angle, manual or CNC crowning is essential which will offset potential deviations and allow for possible tooling wear to maintain parallel contacting surfaces. CNC crowning systems allow the press brake control to be pre-programmed with machine characteristics and deflection data. Adjust the calculate and setting accordingly for different characteristics of different materials.



Structure Configuration—



Hydraulic System

Proportional control "hydraulic system block"

Hydraulic transmission with high reliability

integrated hydraulic system can effectively alleviate the problem caused by leakage of hydraulic fluid.

Linear Encoder Feedback

The deformation is measured accurately

Compensated by feedback method



The accuracy can be achieved μm level



Electric Component

Strong and durable, ensure the stable operation of the machine.

Reasonable line connection and arrangement greatly reduces the failure rate.

The integrated control module of hydraulic valve group makes the sliding block move smoothly and accurately.

Gasket Sealing Ring

It has good sealing performance, pressure resistance and wear resistance

It is elastic enough not to deform due to temperature changes

Comply with international safety standards and industrial specifications



Optional Configuration _



LASER Safety Guards

DSP LASER protects the press brake operator from the danger of crushing that can take place accidentally between the moving part of the machine and the fixed one. It assures to carry out the machine working cycle penalizing its execution time in the least.



CNC Sheet Follower

Suitable for all kinds of large sheet metal, especially thin metal sheet. Perfect to maintain synchronization with the sheet during the bending process, which lightens the operators work moving heavy pieces, improves bending efficiency and reduces operator risk.

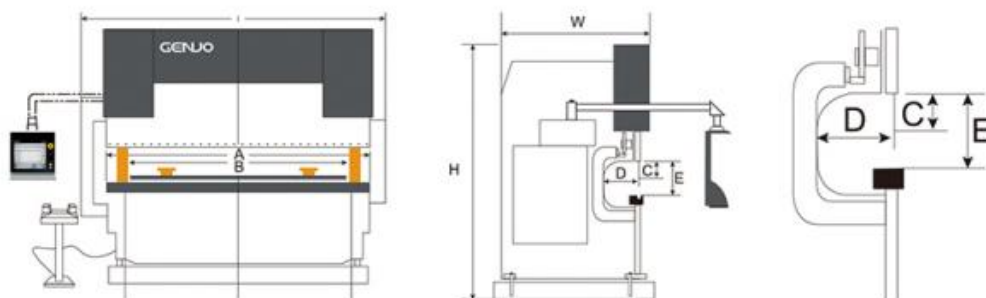


Angle Measuring System

Automatic angle measuring system can measures workpieces and regulates the angle, regardless of material variations. Reduce your materials consumption, shorten your machining times to get work started more quickly.

Standard Equipment	Optional Equipment
▲ GENUO ETC-16T 4 Axis CNC Control	△ ETC-16T 5 Axis/7 Axis CNC Control
▲ Integral welded rigid high tensile steel frame	△ DSP or SDKELI Lasersafe protection guard
▲ High precision Y1,Y2 axis synchronized closed-loop feedback	△ Energy saving & low noise main servo SVP control
▲ Accurate X axis back gauge system	△ 2 Axis(X,R) or 4-Axis (X,R,Z1,Z2)back gauge
▲ CNC Motorized crowning system	△ The CNC Bending Sheet Follower
▲ European-style punch and 4V/2V/1V Dies	△ WILA type top and bottom tool clamping system
▲ Fast punch clamps and movable sliding front support	△ Bending tools management cabinet or trolley

ESC Technical Specification —



Model	Nominal Pressure	A Length of Table	B Distance Between Columns	D Throat Depth	E Open Height	C Ram Strokes	Motor Power	Approx Weight	Overall Dimension
ESC	(KN)	(mm)	(mm)	(mm)	(mm)	(mm)	(kw)	(kg)	(L x W x H)(mm)
40T/1600	400	1600	1250	300	420	150	4	2800	1950*1750*2350
63T/2500	630	2500	1960	320	420	150	5.5	4200	2850*1750*2350
80T/2500	800	2500	1960	350	480	200	7.5	4500	2850*1850*2450
100T/2500	1000	2500	2000	400	480	200	7.5	5300	2850*1850*2500
100T/3200	1000	3200	2600	400	480	200	7.5	6500	3850*1850*2600
125T/2500	1250	2500	2000	400	480	200	7.5	5500	3000*1850*2500
125T/3200	1250	3200	2600	400	480	200	11	7000	3850*1850*2600
125T/4000	1250	4000	3200	400	480	200	11	8500	4610*1850*2600
160T/3200	1600	3200	2600	400	480	200	11	8800	3900*1900*2600
160T/4000	1600	4000	3200	400	480	200	11	10000	4650*1900*2700
200T/3200	2000	3200	2600	400	480	200	15	11600	3900*1900*2700
200T/4000	2000	4000	3200	400	480	200	15	14000	4700*1900*2800
200T/5000	2000	5000	4000	400	480	200	15	16000	5800*1900*2900
200T/6000	2000	6000	4900	400	480	200	15	18000	6800*1900*3000
250T/3200	2500	3200	2600	400	520	250	18.5	12500	3900*2100*2800
250T/4000	2500	4000	3200	400	520	250	18.5	15000	4700*2100*2900
250T/5000	2500	5000	4000	400	520	250	18.5	17000	5800*2100*3000
250T/6000	2500	6000	4900	500	520	250	18.5	20000	6500*2100*3100
320T/3200	3200	3200	2600	400	520	250	22	14500	4000*2100*3000
320T/4000	3200	4000	3200	400	520	250	22	17500	4800*2200*3200
320T/5000	3200	5000	4000	500	520	250	22	20000	5800*2200*3400
320T/6000	3200	6000	4900	500	520	250	22	23500	6500*2200*3600
400T/4000	4000	4000	3200	500	600	320	30	22000	4800*2300*3500
400T/6000	4000	6000	4900	500	600	320	30	31000	6500*2300*3800



0086 555 7168598



sales@genuogroup.com



genuocnc.com

Wanda Center 1116, Yushan District, Maanshan, Anhui, China 243000