



## HSB Series Swing Beam Shear CNC Plate Hydraulic Swing Beam Shearing Machine

Our Product Introduction

### Basic Information

- Place of Origin: China
- Brand Name: genuo
- Minimum Order Quantity: 1
- Price: negotiable
- Packaging Details: carton box
- Payment Terms: L/C, T/T, D/P, D/A



### Product Specification

- Brand: GENUO
- Product\_name: Hydraulic Metal Cutting Machines
- Production\_experience: Rich
- Technology: Shearing Cutting Machines
- Types: Swing Beam Type, guillotine Type, CNC Plate Shears
- Features: Low Energy Consumption, low Noise
- Innovation: Continuous
- Manufacturing\_facilities: World-class
- Highlight: **HSB Series swing beam shear ,  
CNC swing beam shear ,  
Plate hydraulic swing beam shearing machine**

for more products please visit us on [genuocnc.com](http://genuocnc.com)

## Swing Beam Shear / HSB Series

# SHEARING MACHINE



## Powerful Shear Force

- Remarkable Performance
- High Efficiently of Cutting
- Good Quality and Durable



### Standard Equipment

- ESTUN E21S NC control
- Shilin stepping motor frequency converter
- Back gauge with roll guide and ball screw
- SIEMENS main motor, Schneider electric
- Sunny pump, Rexroth hydraulic valve
- EMB ferrule type pipe connector, NO, K sealing rings
- Roller bearings on the front support table
- Sheet sliding system and front support arms
- Collapsible guardrail finger protection

### Optional Equipment

- E200PS/ CybTouch 8/ DAC-360T CNC control
- Sheet support system for thin sheets
- Energy saving main servo motor pump system
- Moveable controller panel, Wireless foot pedal
- Hydraulic oil cooling and heating system
- Automatic blade gap adjustment device
- Front angle gauge and side gauge
- Light safety system for finger protection
- 4~20mm thickness, 1.6~6M length optional

### CNC Controller



#### **E21S(ESTUN)**

Backgauge control;  
Control ordinary motors or inverters;  
Intelligent positioning;  
Dual programmable digital output;  
Workpiece count;  
40 program storage, Each program has 25 steps;  
Unilateral positioning;Yield function;  
One-key backup and restore of parameters;  
Metric system.



#### **E200PS(ESTUN)**

CAN bus control X axis servo;  
Shear control;Color LCD HD display;  
digital output;40 program storage,  
each program has 25 steps;  
Unilateral positioning;Dual programmable  
Built-in cutting time, retreat delay;  
One-key backup and restore of parameters;  
Full-function online diagnosis,  
real-time alarm prompt Reserve a safe,  
supporting material interface;  
Metric/English;Chinese-English.



#### **CybTouch 8 G(CYBELEC)**

High-contrast touchscreen,  
with vivid colors.Simple pages,  
large keys, clear display with  
all the information the operator needs.  
Intuitive and user-friendly interface.  
Complete programming of parts in  
seconds.Quick set up of the machine  
with theEasyCut page.  
Contextual help and warning pop-up.

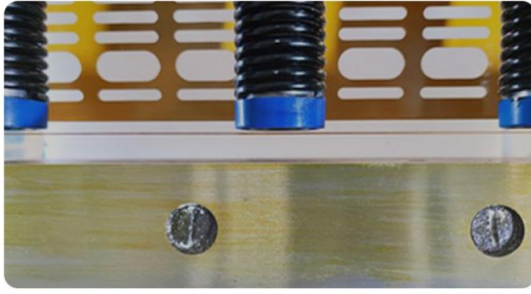


#### **DAC-360T (Delem)**

Panel based housing;Bright LCD screen;  
Back / front gauge control;  
Retract function;  
Cutting angle and gap control;  
Stroke length limitation;  
Manual movement of all axes;  
Force control;Sheet thickness  
measurement;Return to Sender  
function; Sheet support.

### **General Instructions**

Powerful frame & robust design for perfect cutting.Hardened and ground blades for long life and precise Proved  
and rigid design with swing beam  
top table Minimum deformation and optimum cutting quality with best cutting angle CE standards security.  
The combination of economic and perfect cutting performance CNC controlled gap adjustment and cutting angle.  
Adopt friendly CNC touch screen  
control unit Provide flexible use for narrow or wide, thin or thick sheet metal cutting.  
Automatic swing up back gauge for more comfortable use.Sheet support arms Balls transfered table and T-slot  
front feedings arm helps pieces cutting.  
Table with balls and feeding plates



### Hydraulic Hold downs

Built-in spring structure, where the lower part with special material gasket to avoid leaving trace line on aluminum alloy or other sensitive material.



### Shear Blades

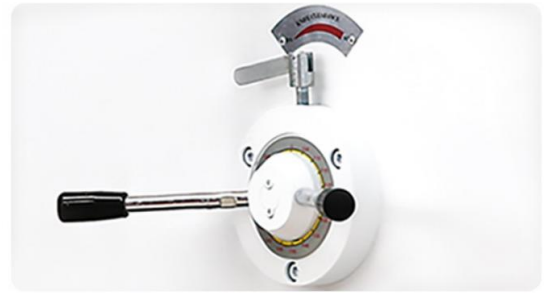
High Precision Ball Screw, Made using special alloy steel according to the customer's needs: material to be cut, holes & hardening. Suitable to guarantee reliability & wear resistance. The machine can be equipped with 9CrSi, 6CrW2Si and SKD-11 all steel shear blade.

### Main Configuration



### Backgauge Motor

The backgauge stopper is equipped with high-quality drive motor to run at a higher speed and stably. Optional servo motor.



### Fast Blade Gap Adjustment Device

Simple and quick manual adjustment, the implementation of the blade gap adjustment.



### Siemens Main Motor

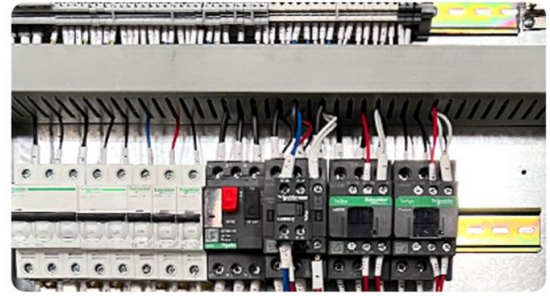
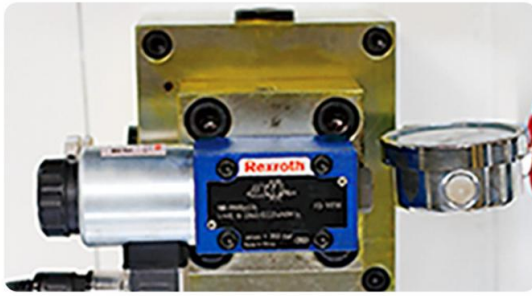
The powerful Siemens motor provides stable shear force guarantee the machine service life, and low noise in work.



### EMB Bite Type Tube Fittings

Using galvanized cold drawn pipe and EMB ferrule type pipe joint. Reduce the risk of oil leakage by 50% compared with most machines.





### Hydraulic Valve

The BOSCH (Rexroth) integrated hydraulic system is compact. Adopts electro-hydraulic proportional pressure valve, and the whole process pressure can be programmed and controlled to ensure machine stable .

### Electrical System

Our machine adopt Schneider electrical components. The high quality electric parts can make the machine performing well even the electricity is not stable and customers can easily get the replacement anywhere in the world.

### Characteristics



### Front Worktable

- Ball Transfer Table
- Hydraulic Holddowns
- Front Protection Frame

Worktable with ball to decrease the friction and the scratch of sheet plate when feeding .



### **Stable Back Gauge**

- Fast and high accuracy
- Reliable movement
- Adjustment from each point
- Resistance to crash
- Maintenance free

The unique and novel ball screw linear guide structure back-gauge ensures high positioning accuracy.

Adjustable beam guiding rule and synchronous transmission structure, stable and reliable .

### **Upgradeable Instructions**



**Vertical Adjustment and Front Stop Position Device**



**Angle Protractor Positioning Device**



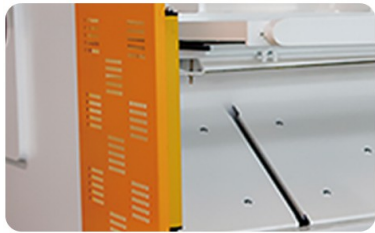
**Pneumatic Sheet Support System**



**Servo Motor**



**Fast Blade Gap Adjustment**

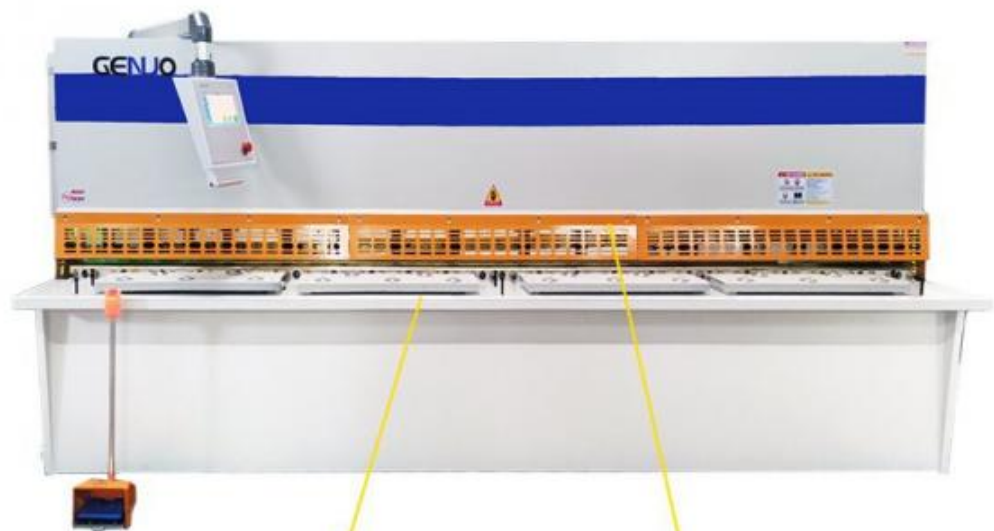


**Light Barrier Protection**

**Swing Beam Shear**

# Machine Features

Powerful And Fully Compatible



Front support rolling feeding

Double protection & safe shearing



**Up to 20 Feet Cut Length**

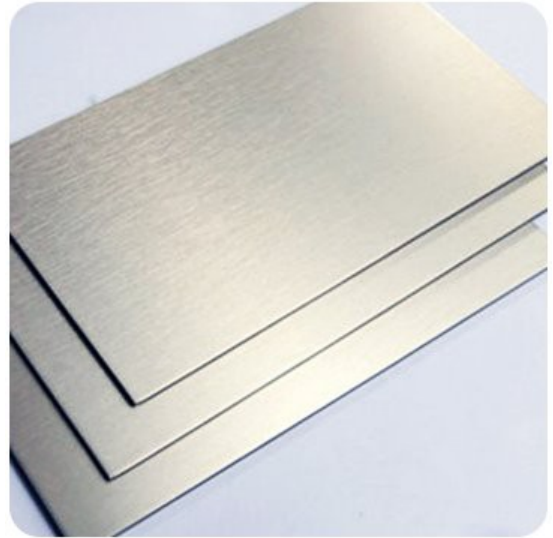
**Up to 3/4" Mild Steel Cutting Capacity**

**Different Materials**



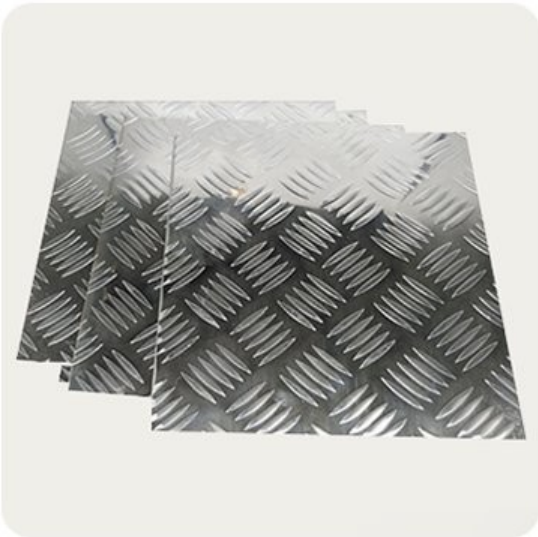
### **Mild Steel**

Smooth and neat



### **Stainless Steel**

Smooth and neat



### **Aluminum plate**

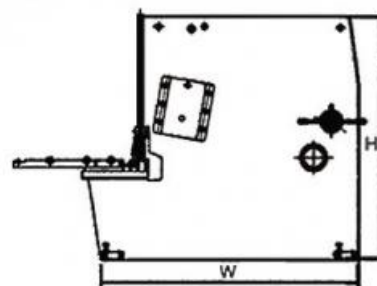
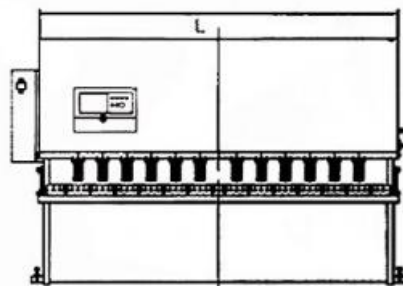
Smooth and neat



### **Sheet Copper**

Smooth and neat

## **Technical Specification**





Model	Cutting Thickness	Cutting Length	Cutting Angle	Material Intension	Background Stroke	Cutting Times	Main Power	Approx. Weight	Overall Dimension
TYPE	(mm)	(mm)	(°)	(Kv/Cm)	(mm)	(T.Min.)	(Kw)	(Kg)	(L x W x H)(mm)
4x2500	4	2500	1°30'	≤450	20-800	16	5.5	3500	3300x1610x1620
4x3200	4	3200	1°30'	≤450	20-800	14	5.5	4500	3840x1610x1620
4x4000	4	4000	1°30'	≤450	20-800	10	5.5	6500	4600x1700x1700
4x6000	4	6000	1°30'	≤450	20-800	8	7.5	11000	6400x2100x3200
6x2500	6	2500	1°30'	≤450	20-600	14	7.5	5000	3400x1610x1620
6x3200	6	3200	1°30'	≤450	20-600	12	7.5	6000	3840x1610x1620
6x4000	6	4000	1°30'	≤450	20-600	8	7.5	8200	4620x1750x1700
6x5000	6	5000	1°30'	≤450	20-600	6	11	10500	5400x1800x1900
6x6000	6	6000	1°30'	≤450	20-600	5	11	16500	6480x2100x2300
8x2500	8	2500	1°30'	≤450	20-600	10	7.5	6000	3400x1700x1700
8x3200	8	3200	1°30'	≤450	20-600	8	7.5	7200	3860x1700x1700
8x4000	8	4000	1°30'	≤450	20-600	8	7.5	8800	4640x1700x1700
8x5000	8	5000	1°40'	≤450	20-600	8	11	11500	5400x2100x2000
8x6000	8	6000	1°40'	≤450	20-600	8	11	18000	6480x2100x2000
10x2500	10	2500	2°	≤450	20-600	9	11	7300	3400x1700x1700
10x3200	10	3200	2°	≤450	20-600	9	11	8000	3860x1700x1700
10x4000	10	4000	2°	≤450	20-600	8	11	12050	4650x2100x2000
10x6000	10	6000	2°	≤450	20-1000	5	15	24000	6500x2100x2300
12x2500	12	2500	2°	≤450	20-600	9	18.5	9000	3500x2150x2000
12x3200	12	3200	2°	≤450	20-600	9	18.5	10800	3880x2150x2000
12x4000	12	4000	2°	≤450	20-1000	8	18.5	13000	4680x2150x2000
12x5000	12	5000	2°	≤450	20-1000	6	18.5	16000	5900x2150x2000
12x6000	12	6000	2°	≤450	20-1000	5	18.5	29500	6900x2600x2700
16x2500	16	2500	2°20'	≤450	20-600	9	22	11000	3500x2150x2000
16x3200	16	3200	2°20'	≤450	20-600	8	22	13000	3880x2150x2000
16x4000	16	4000	2°20'	≤450	20-1000	8	22	16300	4650x2150x2000
16x5000	16	5000	2°20'	≤450	20-1000	6	22	20000	5900x2600x2700
16x6000	16	6000	2°20'	≤450	20-1000	5	22	36000	6900x2700x2700
20x2500	20	2500	2°30'	≤450	20-1000	8	22	15800	3600x2300x2500
20x3200	20	3200	2°30'	≤450	20-1000	8	22	18500	4150x2350x2700
20x4000	20	4000	2°30'	≤450	20-1000	5	22	21500	4850x2600x2700

Hot Tags: HSB Series Swing Beam Shear, China, suppliers, manufacturers, factory, price, cost, cheap, for sale,



Maanshan Genuo Machinery Manufacturing Co., Ltd.



0086 555 7168598



sales@genuogroup.com



genuocnc.com

Wanda Center 1116, Yushan District, Maanshan, Anhui, China 243000