



## HSC Series CNC Press Brake 7 Axis Bending Press Machine

Our Product Introduction

### Basic Information

- Place of Origin: China
- Brand Name: genuo
- Minimum Order Quantity: 1
- Price: negotiable
- Packaging Details: carton box
- Payment Terms: L/C, T/T, D/P, D/A



### Product Specification

- Features: Array
- Product Name: Genius Pro HSC Series CNC Press Brake
- Highlight: **HSC CNC Press Brake, 7 Axis CNC Press Brake , CNC Control bending press machine**

for more products please visit us on [genuocnc.com](http://genuocnc.com)

## Product Description

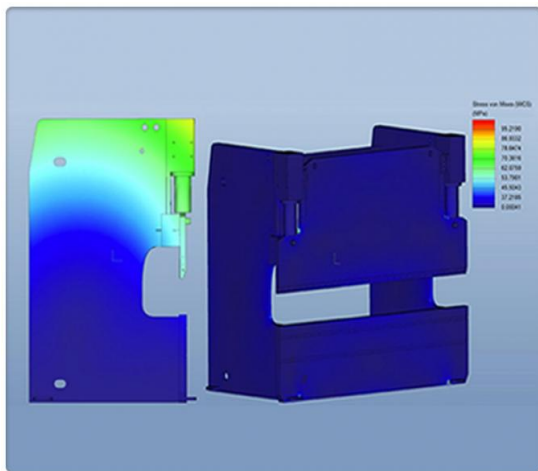
### Standard Equipment

- ◆ Delem DA-66T 7-Axis CNC Control
- ◆ High-yield steel mono-block frame
- ◆ Precision Y1, Y2 axis synchronous Ram positioning
- ◆ Accurate heavy-duty X,R,Z1,Z2 axis back gauge
- ◆ Auto V axis motorized CNC crowning system
- ◆ European-style punch and 4V/2V/1V Dies
- ◆ Fast punch clamps and movable sliding front support
- ◆ SIEMENS main motor,Sunny pump,Schneider Electric
- ◆ BOSCH Rexroth hydraulic system,GIVI linear encoder
- ◆ EMB ferrule type pipe connector, NO,K sealing rings

### Optional Equipment

- ◇ CYBELEC CybTouch 15, ESA 875W,Delem DA-69T
- ◇ Main servo motor SVP control(Energy conservation)
- ◇ DSP or Keli Lasersafe protection guard
- ◇ CNC sheet follower front support device.
- ◇ Lasercheck angle detection feedback device
- ◇ WILA type top and bottom tool clamping system
- ◇ Fully automatic bending robotic cell
- ◇ Automatic rail and screw lubrication system
- ◇ Bending tools management cabinet or trolley
- ◇ Single/Tandem/Trio optional

## Structure Details

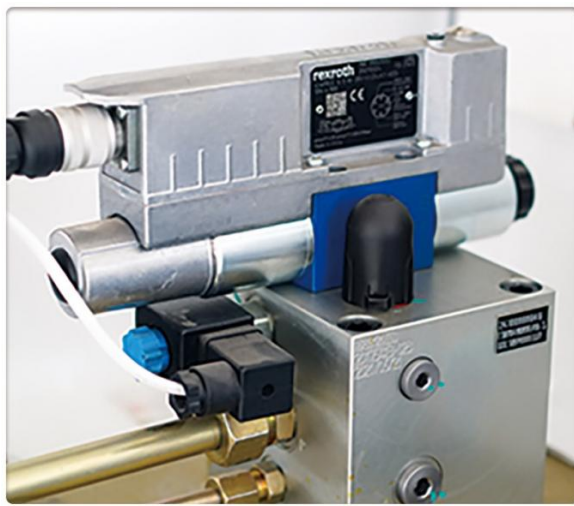


### ▼ Rigid Frame Construction

GENUO have vast experience with R&D and designing components to very tight tolerances with SOLIDWORKS, CAD modelling techniques, and that CAE, ANSYS, SOLIDWORKS used as the method to analyze the linear static construction, stress and deformation for machine frames. So for complicated structures, highly complex loadings and transient modelling. The foundation of all GENUO press brakes is a solid, monoblock frame made from high-yield steel.

### ▼ 4 Axis Back Gauge (X,R,Z1,Z2)

Establishing the right back gauge for your projects will allow for increased part production and precision. From intricate parts which typically require more axes to large quantities that require more time and therefore increased cost, the correct back gauge for each job is essential to lowering costs per part which ultimately benefits your bottom line. GENUO technicians are happy to assist you with any questions you may have on your project requirements.



#### ▼ Closed-loop Proportional Control

German Bosch Rexroth integrated "hydraulic system block", hydraulic transmission with high reliability , integrated hydraulic system can effectively alleviate the problem caused by leakage of hydraulic fluid.

#### ▼ Linear Encoder Feedback

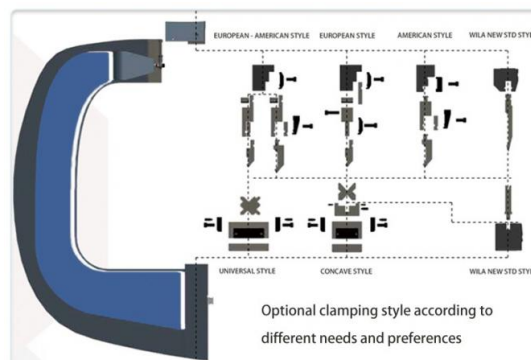
The deformation is measured accurately and compensated by feedback method.  
The accuracy can be achieved  $\mu\text{m}$  level.

### Tooling and Clamping

GENUO provides a variety of tooling solutions to meet your different production needs. Not only that, we are also experts in the field of bending tools.

If you have any special bend, our engineers will customize special tools for each workpiece, which greatly expands your press brake function and revenue.

To help greatly improve your productivity and business benefits.

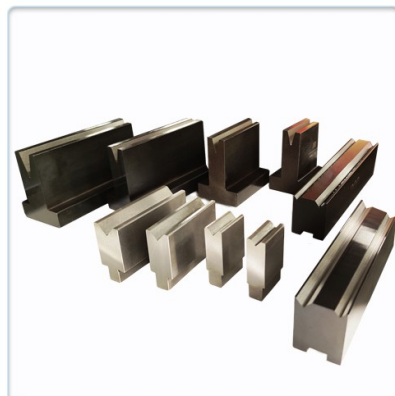




EURO Style Clamping System  
and Tools are optional



Wilia New STD. Style  
punch are standard on.

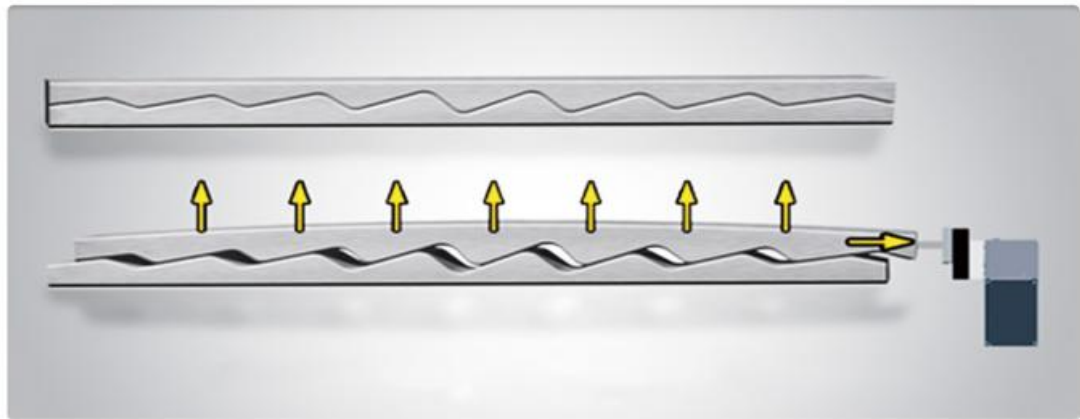
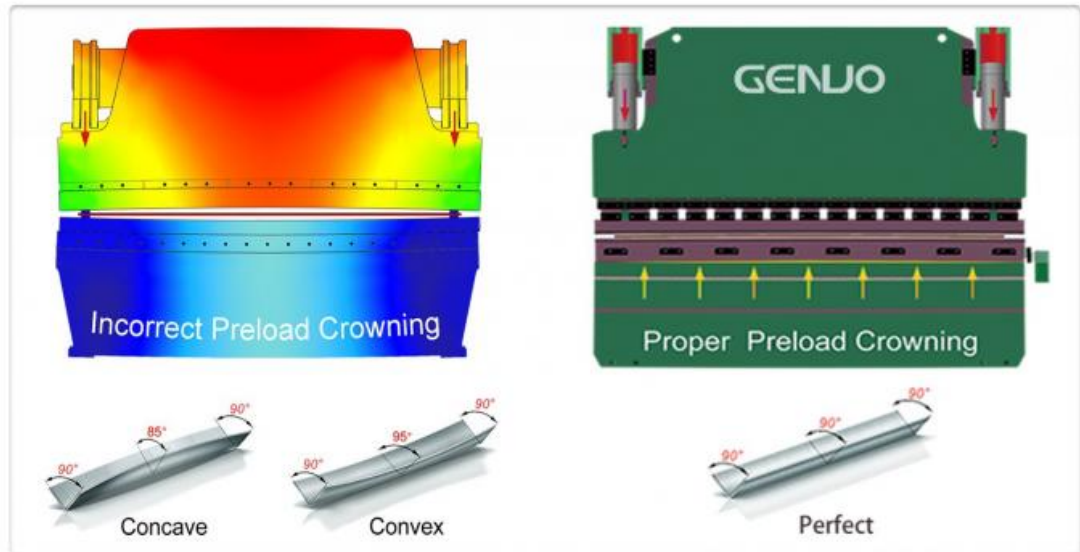


1V Die Standard on. Mutil-V,  
4V/2V Dies are optional.

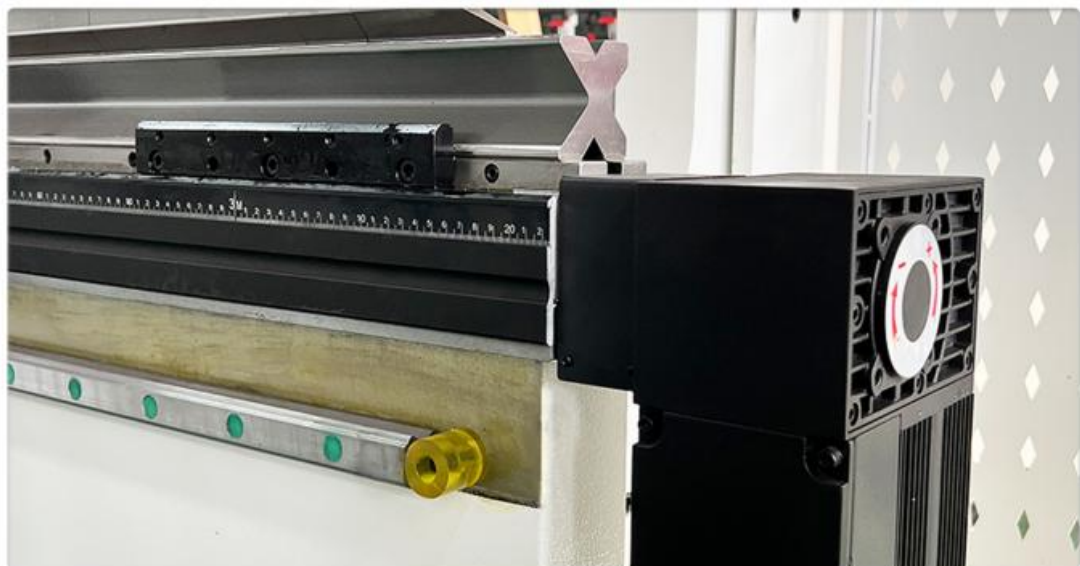
## Auto Crowning Systems

To confirm a constant bend angle, manual or CNC crowning is essential which will offset potential deviations and allow for possible tooling wear to maintain parallel contacting surfaces. CNC crowning systems allow the press brake

control to be  
pre-programmed with machine characteristics and defection data.  
Adjust the calculate and setting accordingly for different characteristics of different materials.



All CNC Press Brake above 1600mm are equipped as standard.



CNC Motorized Crowning  
**Optional Configuration**

### Servo Pump Control Technology

The main servo motor SVP can controls the power stroke, fast stroke, and bending force. It can significantly reduce idle overflow and noise of actuator, suppress oil temperature rise, and ensure continuously stable operation. Modular structure makes installation more flexible and consumes less hydraulic oil (save 40% energy in comparison to standard press brakes)



### LASER Safety Guards

DSP LASER protects the press brake operator from the danger of crushing that can take place accidentally between the moving part of the machine and the fixed one. It assures to carry out the machine working cycle penalizing its execution time in the least.

### Auto Tool Clamping System

WILA'S state of the art Clamping systems can offer the ultimate solution when it comes to efficiently changing tools both hydraulic and Pneumatic. Accuracy and ergonomics have been coordinated to realize the highest level of productivity.



### CNC Sheet Follower

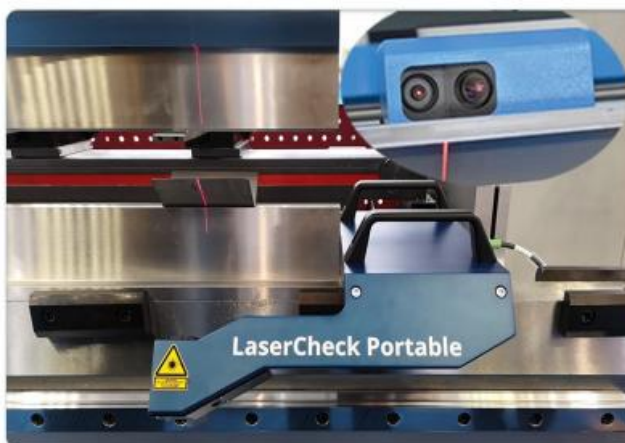
This CNC bending support suitable for all kinds of large sheet metal, especially thin metal sheet. Perfect to maintain synchronization with the sheet during the bending process, which lightens the operators work moving heavy pieces, improves bending efficiency and reduces operator risk.

## Angle Measuring System

Automatic angle measuring system can measures workpieces and regulates the angle, regardless of material variations.

Reduce your materials consumption.

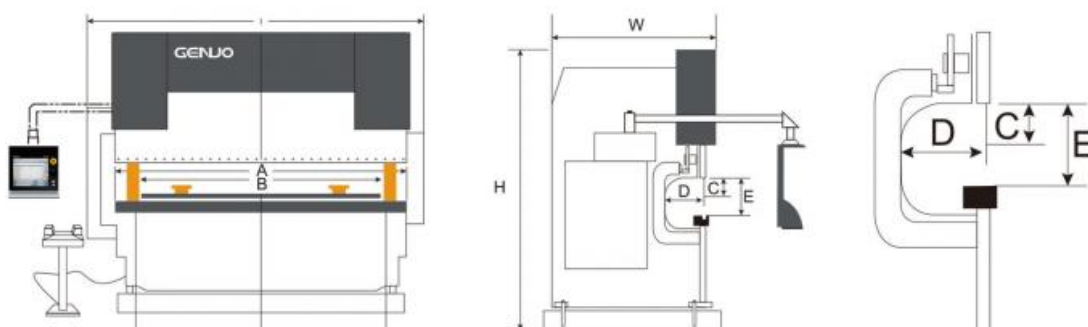
Shorten your machining times to get work started more quickly.



## Bending Robotic Cell

In industry 4.0. Thanks to Genuo's fully automated bending cell solution. Realize unmanned reliable bending production around the clock. All risks associated with part handling during bending are faced by the robot and not by the operator. More safe and efficient

## HSC PRO Technical Specification



| Model     | Nominal Pressure | A<br>Length of Table<br>(mm) | B<br>Distance Between Columns<br>(mm) | D<br>Throat Depth<br>(mm) | E<br>Open Height<br>(mm) | C<br>Ram Strokes<br>(mm) | Motor Power<br>(kw) | Approx Weight<br>(kg) | Overall Dimension<br>(L x W x H) (mm) |
|-----------|------------------|------------------------------|---------------------------------------|---------------------------|--------------------------|--------------------------|---------------------|-----------------------|---------------------------------------|
| 40T/1600  | 400              | 1600                         | 1250                                  | 300                       | 420                      | 150                      | 4                   | 3000                  | 1950*1750*2350                        |
| 63T/2500  | 630              | 2500                         | 1900                                  | 320                       | 420                      | 150                      | 5.5                 | 4800                  | 2850*1750*2350                        |
| 80T/2500  | 800              | 2500                         | 1900                                  | 350                       | 480                      | 200                      | 7.5                 | 5500                  | 3850*1850*2550                        |
| 100T/3200 | 1000             | 3200                         | 2600                                  | 400                       | 480                      | 200                      | 7.5                 | 8500                  | 3850*1850*2600                        |
| 100T/4000 | 1000             | 4000                         | 3200                                  | 400                       | 480                      | 200                      | 7.5                 | 9600                  | 4610*1850*2700                        |
| 125T/2500 | 1250             | 2500                         | 1900                                  | 400                       | 480                      | 200                      | 7.5                 | 7800                  | 3000*1850*2600                        |
| 125T/3200 | 1250             | 3200                         | 2600                                  | 400                       | 480                      | 200                      | 11                  | 9000                  | 3850*1850*2600                        |
| 125T/4000 | 1250             | 4000                         | 3200                                  | 400                       | 480                      | 200                      | 11                  | 10900                 | 4610*1850*2700                        |
| 160T/3200 | 1600             | 3200                         | 2600                                  | 400                       | 480                      | 200                      | 11                  | 10500                 | 3900*1900*2600                        |
| 160T/4000 | 1600             | 4000                         | 3200                                  | 400                       | 480                      | 200                      | 11                  | 12000                 | 4650*1900*2700                        |
| 200T/3200 | 2000             | 3200                         | 2600                                  | 400                       | 480                      | 200                      | 15                  | 12000                 | 3900*1900*2700                        |
| 200T/4000 | 2000             | 4000                         | 3200                                  | 400                       | 480                      | 200                      | 15                  | 14000                 | 4700*1900*2700                        |
| 250T/3200 | 2500             | 3200                         | 2600                                  | 400                       | 480                      | 200                      | 18.5                | 14600                 | 3900*2100*2600                        |
| 250T/4000 | 2500             | 4000                         | 3200                                  | 400                       | 480                      | 200                      | 18.5                | 16500                 | 4650*2100*2650                        |

Hot Tags: genius pro hsc series cnc press brake, China, suppliers, manufacturers, factory, price, cost, cheap, for sale,



Maanshan Genuo Machinery Manufacturing Co., Ltd.



0086 555 7168598



sales@genuogroup.com



genuocnc.com

Wanda Center 1116, Yushan District, Maanshan, Anhui, China 243000

